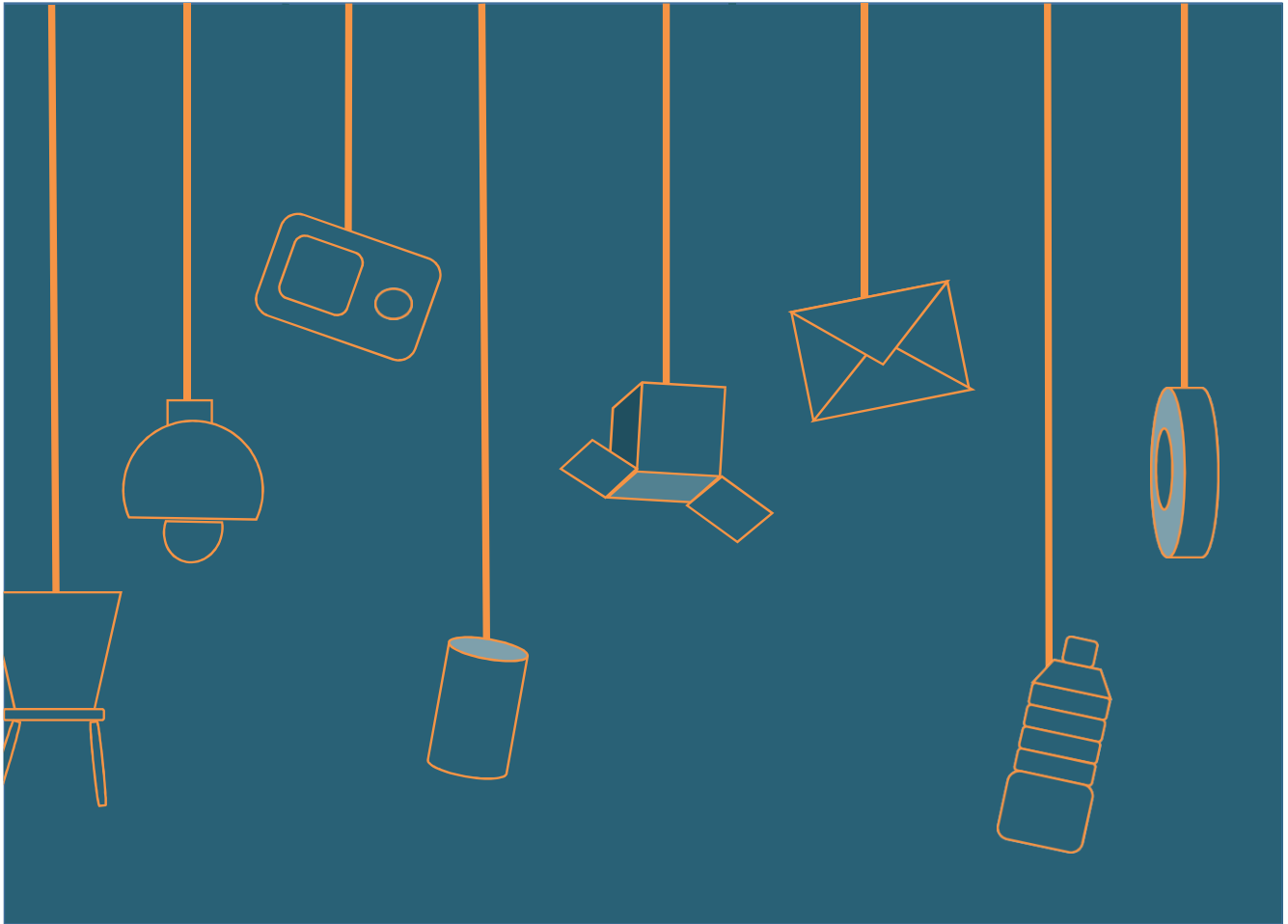


University of Oxford Non-hazardous waste guide



OVERVIEW

The University of Oxford is committed to reducing its impact on the environment by preventing, reducing and recycling more of its waste.

Every staff member and student affects the amount of waste produced and the University's recycling rate.

As part of the implementation of the Environmental Sustainability Strategy, the University adopted new waste and recycling targets.

- Reduce waste by 10%
- Achieve recycling rate of 40%¹

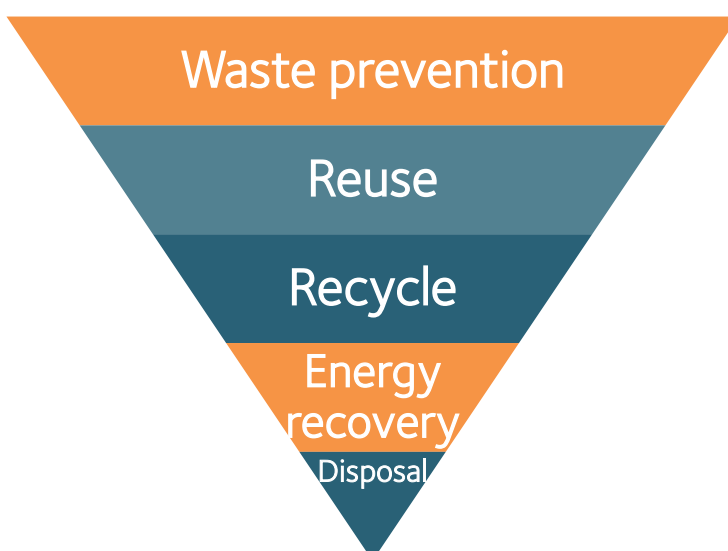


One bit of rubbish in the recycling makes it all rubbish.
Your individual actions matter.

The waste hierarchy is a good way to think about how we manage waste. The best option is to prevent waste from being produced in the first place. Preventing waste can be as simple as printing double-sided.

The least preferred option is disposal or landfill. The University does not send any of the waste collected through its non-hazardous waste contractor Select Environmental to landfill.

The higher up the waste hierarchy our actions are, the better for the environment. The University also benefits from saving money by avoiding unnecessary purchase and disposal costs.



Waste hierarchy diagram

¹ University waste and recycling targets, as were set on February 2022:

- 10% reduction in non-residential waste mass (kg) per staff and student FTE by 2025.
- 40% recycling rate (non-residential) from total waste mass by 2025

Waste Prevention

Preventing and reducing waste in the first place is the best option for waste management. We aim to do this by giving staff, students and visitors the support they need to make greener choices from the outset.

Consider the following opportunities to reduce waste generated:

- [Equipment sharing](#) database.
- [Guidance](#) on considering the environmental, social and economic impacts of purchases.
- [Preferred suppliers list with offered sustainability services](#) such as take-back schemes for packages (for laboratories, SSO required).

Reuse

The University has a reuse platform through which departments and colleges can share and rehome otherwise unwanted items across the collegiate University.

The system allows staff to:

- avoid purchase costs;
- avoid waste disposal costs;
- save time; and
- help the University reduce its environmental impact.

Staff can sign up here:

www.warp-it.co.uk/oxforduniversity

The system is not for personal items or use.



"Brilliant service, very innovative idea, my department has benefited."



In 2020 The University saved **£114,555** by using Warp-it.
Savings from avoided purchasing costs and waste charges.



10,535 Kg of material diverted from waste to reuse

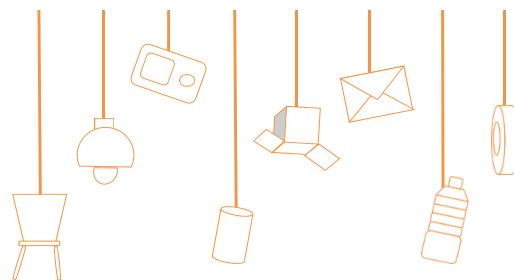


Avoided emission of **52,250 Kg Co2e**

Recycling

The University separates waste into the following streams:

- Dry Mixed Recycling (often in a light green bin)
- Glass
- Food waste
- General/residual waste
- Additional designated bins for specific waste types in specific buildings.



Dry Mixed Recycling (DMR)

A dry mixed recycling container is for **clean**:

✓ Yes, please

- Paper and cardboard
- Drink cans and food tins
- Plastic bottles and containers: types 1 (PET), 2 (DPE), 3 (PVC), 5 (PP), 6 (PS).

Material is sent to a materials recovery facility for separation before being baled and sent for recycling.

Unaccepted items in DMR bins:

✗ No, thanks

- Glass
- Black food trays
- Liquid or food
- Tissues or paper towels.

Confidential paper

A separate collection service can be arranged with Select for confidential paper. The material is compliantly shredded and then treated via the DMR route.

Glass

A glass recycling container is for:

✓ Yes, please

- Glass bottles (all colours);
- Glass jars (without lids); and
- Glassware.

Material is sent for re-melt.

✗ No, thanks

- Heat proof glass (e.g. Pyrex) cannot be recycled



Non-hazardous waste posters, stickers, A-Z guide, FAQs, procedures and training available from: <https://sustainability.admin.ox.ac.uk/link-up-and-learn>.

Food

Leftover food, preparation scraps and out-of-date food can all be segregated for recycling.

A food waste recycling container can be ordered from Select and is for:

✓ Yes, please

- Leftover food and peelings
- Tea bags and coffee grounds
- Meat and fish (raw or cooked).

✗ No, thanks

- Food in packaging
- Bio-degradable (compostable) packaging.

Material is sent for **anaerobic digestion** to generate energy and produce soil improver.

Local recycling pilots

Polypropylene

Several sites across the University operate recycling of clean polypropylene from laboratories. The disposal and recycling are managed locally by the relevant departments.

For more details please contact the building manager:

- Kennedy Institute
- Henry Wellcome Building
- ORCRB
- NDM Research Building
- Innovation Building
- Department of Earth Sciences

Expanded polystyrene

A trial is currently underway at the Old Road Campus where expanded polystyrene (typically used for keeping material cool or hot) is being collected so that it can be repurposed. Estates Services, along with Select, are assessing the viability of this service, potentially rolling it out to other locations.

General waste

Material is sent for recovery at an energy from a waste plant.

The aim is to place as little waste in this container as possible.

A general waste container is for:

✓ Yes, please

- Plastic bags and wrappers
- Unknown plastics
- Tissues and hand towels
- Expanded polystyrene, unless the site has designated collection bin
- Textiles and wood
- Food waste (if no separate collection)
- Glass (if no separate collection).

Other types of waste

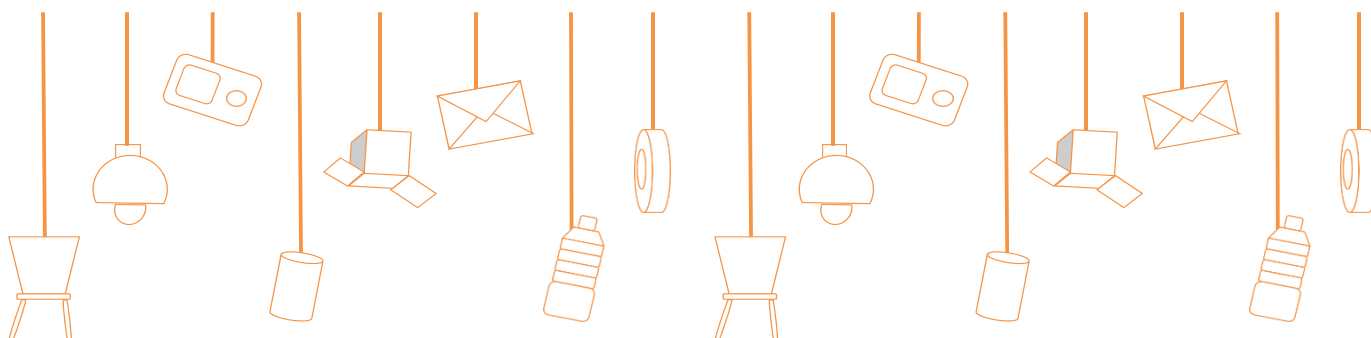
The following items may not be placed in the waste streams outlined above and must be disposed of separately.

More details can be found on our [A-Z waste guide](#).

✗ No, thanks

- Electrical waste e.g. Lights, it equipment and cable
- Batteries
- Liquid waste
- Bulky waste or very heavy waste
- Hazardous wastes

For materials not listed above, please visit our [waste A-Z](#), or contact the Environmental Sustainability team at sustainability@admin.ox.ac.uk.



Contact information:

For general non-hazardous waste management queries at Oxford University and for WARPit, contact the Environmental Sustainability team



sustainability@admin.ox.ac.uk

<https://sustainability.admin.ox.ac.uk/waste-management>

Tel: 01865 614 605

@OxfordEnvSust

To arrange a collection or discuss your recycling streams on site contact Select Environmental on:



oxford@selectenviro.co.uk

www.selectenviro.co.uk

Tel: 0118 975 900

Environmental Sustainability Estates services

T: 01865 614605

E: sustainability@admin.ox.ac.uk

www.admin.ox.ac.uk/estates

